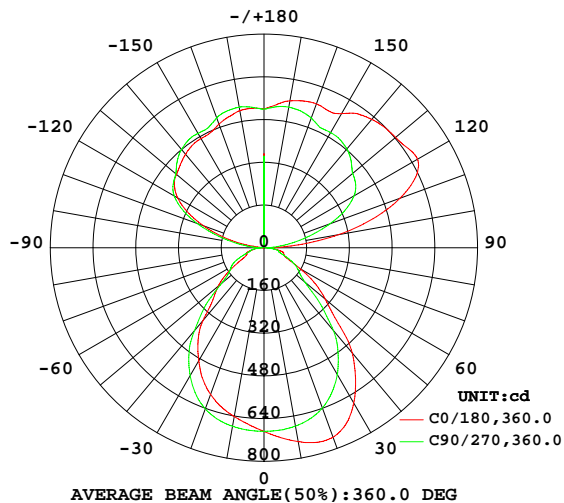


LUMINAIRE PHOTOMETRIC TEST REPORT

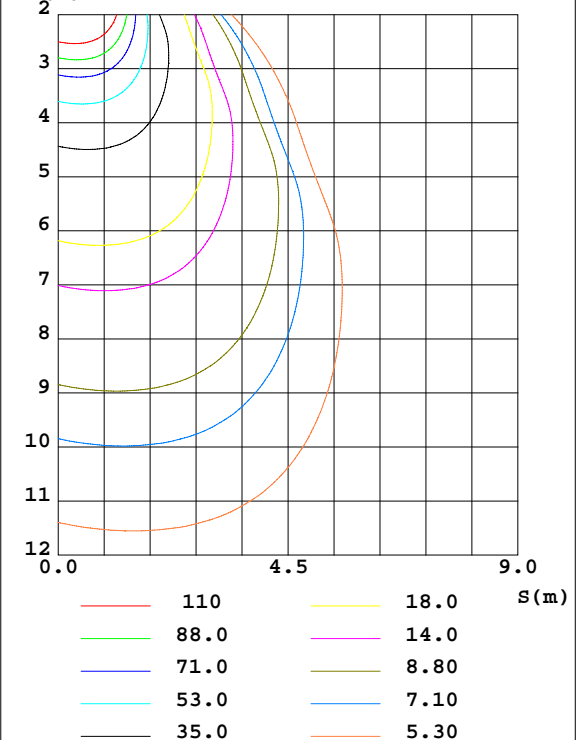
Test:U:229.79V I:0.1294A P:28.243W PF:0.9496 Freq:49.99Hz Lamp Flux:3664.45x1 lm		
NAME:	TYPE:	WEIGHT:
SPEC.:	DIM.: 600*203*10	SERIAL No.:
MFR.:	SUR.:0.58*0.122	Shielding Angle:

DATA OF LAMP		PHOTOMETRIC DATA Eff: 129.75 lm/W			
MODEL		Imax(cd)	757.7	S/MH(C0/180)	1.09
NOMINAL POWER(W)	30	LOR(%)	100.0	S/MH(C90/270)	1.20
RATED VOLTAGE(V)	230.0	TOTAL FLUX(lm)	3664.5	η UP,DN(C0-180)	30.6,19.6
NOMINAL FLUX(lm)	3664.45	CIE CLASS	SEMI-IND.	η UP,DN(C180-360)	30.1,19.7
LAMPS INSIDE	1	η up(%)	60.7	CIBSE SHR NOM	1.25
TEST VOLTAGE(V)	230.0	η down(%)	39.3	CIBSE SHR MAX	1.25

LUMINOUS INTENSITY DISTRIBUTION DIAGRAM



C0 PLANE ISOLUX DIAGRAM (UNIT:lx)



C Range: 0 - 360DEG
C Interval: 5.0DEG
Test Speed: MEDIUM
Temperature:25.3DEG
Operators:
Test Date:2026-01-17

γ Range: 0 - 180DEG
 γ Interval: 0.5DEG
Test System:EVERFINE GO-2000_V1 SYSTEM V2.0.406.10
Humidity:65.0%
Test Distance:11.700m [K=0.8547]
Remarks:

ZONAL FLUX DIAGRAM

ZONAL FLUX DIAGRAM:

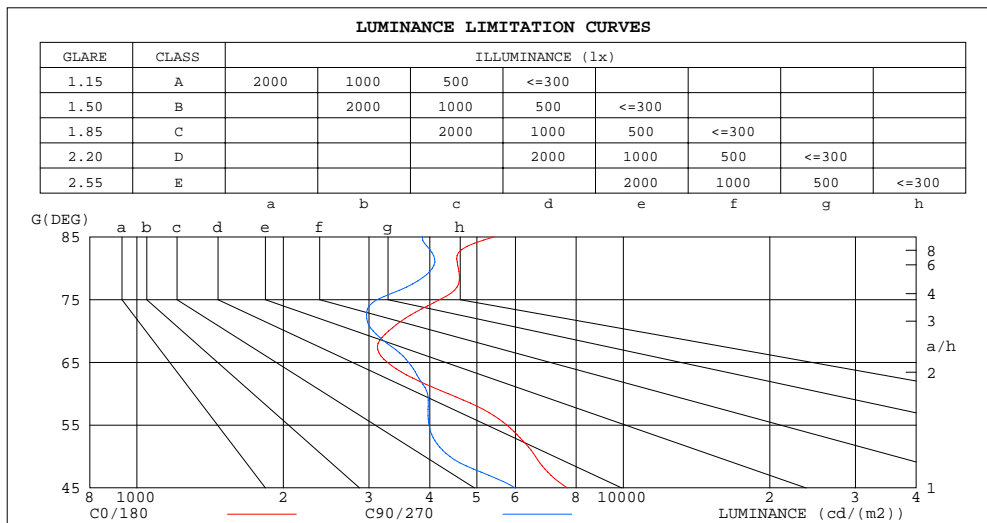
γ	C0	C45	C90	C135	C180	C225	C270	C315	γ	Φ zone	Φ total	$\%lum, lamp$
10	737.1	704.8	678.2	654.1	642.0	654.6	678.9	705.3	0- 10	65.34	65.34	1.78,1.78
20	755.4	689.4	638.9	601.0	584.8	603.1	642.4	691.9	10- 20	189.2	254.5	6.94,6.94
30	672.4	602.7	548.9	507.1	488.8	509.8	553.3	606.0	20- 30	280.8	535.3	14.6,14.6
40	513.9	451.5	404.4	370.2	355.9	370.8	405.2	452.2	30- 40	307.9	843.2	23,23
50	300.1	234.6	200.1	207.0	224.2	211.2	206.9	239.6	40- 50	241.4	1085	29.6,29.6
60	154.4	148.8	140.1	123.9	113.1	124.6	141.1	149.6	50- 60	159.1	1244	33.9,33.9
70	79.71	76.87	74.04	70.02	68.43	75.15	82.26	83.03	60- 70	102.2	1346	36.7,36.7
80	56.28	53.17	49.75	45.11	41.99	43.80	47.67	51.61	70- 80	65.93	1412	38.5,38.5
90	10.30	6.957	4.364	2.237	1.435	3.317	6.091	8.252	80- 90	29.30	1441	39.3,39.3
100	283.1	178.7	109.5	80.38	77.32	82.16	112.4	180.8	90-100	64.42	1506	41.1,41.1
110	541.7	369.7	262.3	232.6	240.9	234.7	265.7	372.3	100-110	235.8	1741	47.5,47.5
120	663.8	494.3	389.3	363.1	373.0	362.2	387.8	493.1	110-120	378.1	2120	57.8,57.8
130	643.7	513.2	433.8	417.6	428.1	416.2	431.5	511.5	120-130	410.6	2530	69,69
140	627.8	540.6	483.2	459.8	457.5	458.4	480.9	538.9	130-140	378.2	2908	79.4,79.4
150	580.5	532.5	498.5	478.9	472.3	476.6	494.8	529.8	140-150	319.4	3228	88.1,88.1
160	573.7	541.4	517.2	500.1	493.0	500.2	517.5	541.6	150-160	235.4	3463	94.5,94.5
170	558.6	545.6	535.1	525.9	521.3	525.6	534.6	545.3	160-170	150.5	3614	98.6,98.6
180	519.8	519.8	519.8	519.8	519.8	519.8	519.8	519.8	170-180	50.81	3664	100,100
DEG	LUMINOUS INTENSITY:cd									UNIT:lm		

C Range: 0 - 360DEG
 C Interval: 5.0DEG
 Test Speed: MEDIUM
 Temperature:25.3DEG
 Operators:
 Test Date:2026-01-17

γ Range: 0 - 180DEG
 γ Interval: 0.5DEG
 Test System:EVERFINE GO-2000_V1 SYSTEM V2.0.406.10
 Humidity:65.0%
 Test Distance:11.700m [K=0.8547]
 Remarks:

LUMINANCE LIMITATION CURVES

Test:U:229.79V I:0.1294A P:28.243W PF:0.9496 Freq:49.99Hz Lamp Flux:3664.45x1 lm		
NAME:	TYPE:	WEIGHT:
SPEC.:	DIM.: 600*203*10	SERIAL No.:
MFR.:	SUR.:0.58*0.122	Shielding Angle:



LUMINANCE cd/(m2)		
G(DEG)	C0/180	C90/270
85	5428	3863
80	4580	4049
75	4194	3118
70	3293	3060
65	3272	3617
60	4365	3958
55	5762	3986
50	6597	4399
45	7677	5999

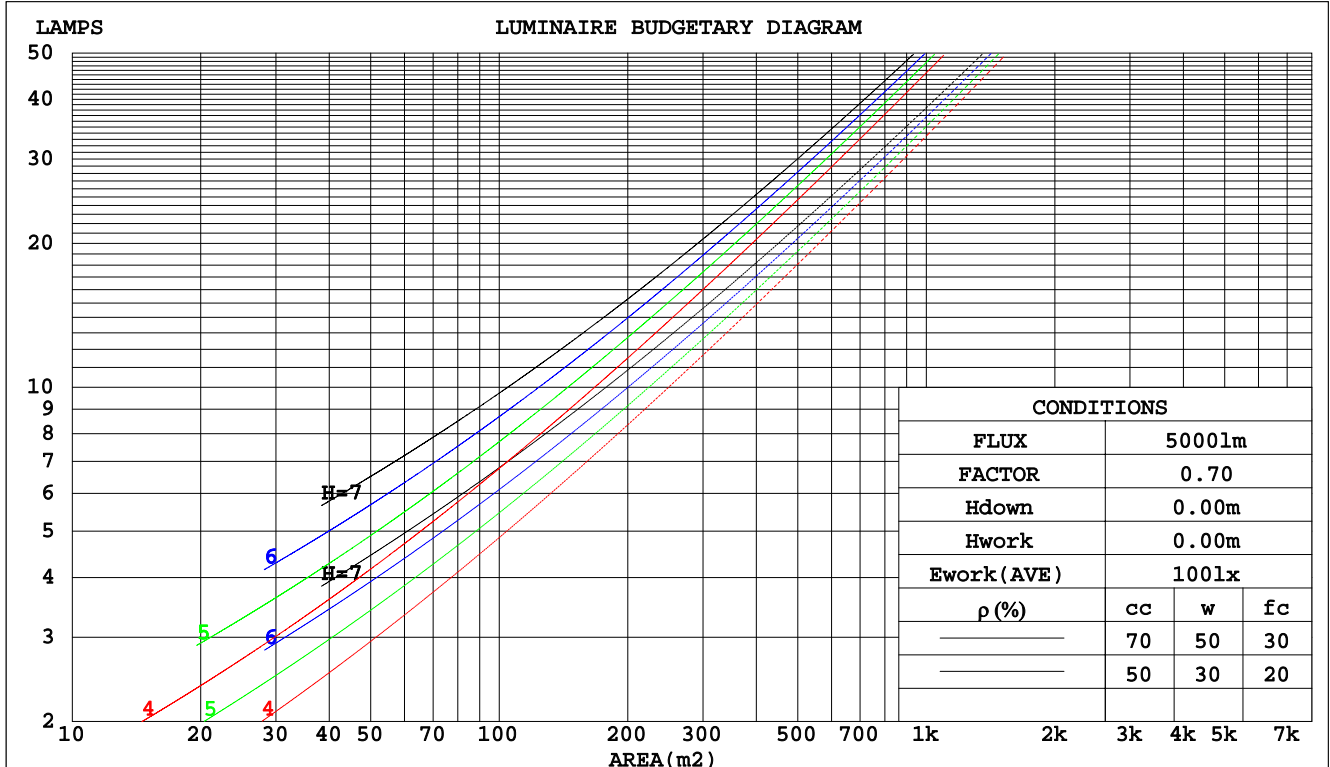
C Range: 0 - 360DEG
C Interval: 5.0DEG
Test Speed: MEDIUM
Temperature:25.3DEG
Operators:
Test Date:2026-01-17

γ Range: 0 - 180DEG
 γ Interval: 0.5DEG
Test System:EVERFINE GO-2000_V1 SYSTEM V2.0.406.10
Humidity:65.0%
Test Distance:11.700m [K=0.8547]
Remarks:

CU AND LUMINAIRE BUDGETARY ESTIMATE DIAGRAM

Test:U:229.79V I:0.1294A P:28.243W PF:0.9496 Freq:49.99Hz Lamp Flux:3664.45x1 lm		
NAME:	TYPE:	WEIGHT:
SPEC.:	DIM.: 600*203*10	SERIAL No.:
MFR.:	SUR.:0.58*0.122	Shielding Angle:

pcc	80%			70%			50%			30%			10%			0
pw	50%	30%	10%	50%	30%	10%	50%	30%	10%	50%	30%	10%	50%	30%	10%	0
pfc	20%			20%			20%			20%			20%			0
RCR	RCR:Room Cavity Ratio			Coefficients of Utilization(CU)												
0.0	1.05	1.05	1.05	.95	.95	.95	.77	.77	.77	.61	.61	.61	.46	.46	.46	.39
1.0	.92	.88	.85	.84	.80	.78	.68	.66	.64	.54	.53	.52	.42	.41	.40	.34
2.0	.81	.75	.70	.74	.69	.65	.61	.57	.54	.48	.46	.44	.37	.36	.34	.29
3.0	.71	.64	.59	.65	.59	.55	.54	.50	.46	.43	.40	.38	.34	.32	.30	.26
4.0	.64	.56	.50	.58	.52	.47	.48	.44	.40	.39	.36	.33	.30	.28	.26	.22
5.0	.57	.49	.44	.52	.46	.41	.43	.38	.35	.35	.32	.29	.28	.25	.23	.20
6.0	.51	.44	.38	.47	.40	.35	.39	.34	.30	.32	.28	.26	.25	.23	.21	.18
7.0	.46	.39	.33	.43	.36	.31	.36	.31	.27	.29	.26	.23	.23	.21	.19	.16
8.0	.42	.35	.30	.39	.32	.28	.33	.28	.24	.27	.23	.21	.21	.19	.17	.14
9.0	.39	.31	.27	.36	.29	.25	.30	.25	.22	.25	.21	.19	.20	.17	.15	.13
10.0	.35	.28	.24	.33	.27	.22	.28	.23	.20	.23	.19	.17	.19	.16	.14	.12



C Range: 0 - 360DEG
C Interval: 5.0DEG
Test Speed: MEDIUM
Temperature:25.3DEG
Operators:
Test Date:2026-01-17

γ Range: 0 - 180DEG
γ Interval: 0.5DEG
Test System:EVERFINE GO-2000_V1 SYSTEM V2.0.406.10
Humidity:65.0%
Test Distance:11.700m [K=0.8547]
Remarks:

WEC AND CCEC

Test:U:229.79V I:0.1294A P:28.243W PF:0.9496 Freq:49.99Hz Lamp Flux:3664.45x1 lm								
NAME:			TYPE:			WEIGHT:		
SPEC.:			DIM.: 600*203*10			SERIAL No.:		
MFR.:			SUR.:0.58*0.122			Shielding Angle:		

pcc	80%			70%			50%			30%			10%			0	
pw	50%	30%	10%	50%	30%	10%	50%	30%	10%	50%	30%	10%	50%	30%	10%	0	
pfc	20%			20%			20%			20%			20%			0	
RCR	RCR:Room Cavity Ratio						Wall Exitance Coefficients(WEC)										
0.0																	
1.0	.264	.150	.048	.239	.136	.043	.192	.110	.035	.148	.085	.027	.108	.063	.020		
2.0	.245	.134	.041	.222	.122	.038	.179	.099	.031	.139	.078	.024	.102	.058	.018		
3.0	.227	.121	.036	.206	.110	.033	.166	.090	.027	.130	.071	.022	.096	.053	.016		
4.0	.210	.109	.032	.191	.100	.030	.155	.082	.024	.121	.065	.020	.090	.049	.015		
5.0	.196	.100	.029	.178	.091	.027	.144	.075	.022	.113	.060	.018	.084	.045	.013		
6.0	.183	.092	.026	.166	.084	.024	.135	.069	.020	.106	.055	.016	.079	.042	.012		
7.0	.171	.085	.024	.156	.078	.022	.127	.064	.018	.100	.051	.015	.075	.039	.011		
8.0	.160	.078	.022	.146	.072	.020	.119	.060	.017	.094	.048	.014	.070	.036	.011		
9.0	.151	.073	.020	.138	.067	.019	.113	.056	.016	.089	.045	.013	.067	.034	.010		
10.0	.143	.068	.019	.130	.063	.018	.107	.052	.015	.084	.042	.012	.063	.032	.009		

pcc	80%			70%			50%			30%			10%			0
pw	50%	30%	10%	50%	30%	10%	50%	30%	10%	50%	30%	10%	50%	30%	10%	0
pfc	20%			20%			20%			20%			20%			0
RCR	RCR:Room Cavity Ratio						Ceiling Cavity Exitance Coefficients(CCEC)									
0.0	.653	.653	.653	.558	.558	.558	.381	.381	.381	.219	.219	.219	.070	.070	.070	
1.0	.643	.623	.604	.550	.534	.520	.376	.368	.360	.217	.213	.209	.069	.068	.068	
2.0	.635	.601	.573	.544	.518	.495	.373	.358	.345	.215	.208	.202	.069	.067	.066	
3.0	.628	.586	.552	.538	.505	.479	.370	.351	.336	.213	.205	.198	.069	.067	.065	
4.0	.621	.574	.538	.533	.496	.467	.366	.346	.329	.212	.202	.195	.068	.066	.064	
5.0	.615	.565	.528	.528	.489	.459	.364	.341	.324	.211	.200	.192	.068	.065	.063	
6.0	.609	.557	.520	.523	.483	.453	.361	.338	.321	.209	.199	.191	.068	.065	.063	
7.0	.603	.551	.515	.519	.478	.449	.358	.335	.318	.208	.197	.189	.067	.065	.063	
8.0	.598	.546	.511	.514	.474	.446	.356	.333	.316	.207	.196	.188	.067	.064	.062	
9.0	.592	.542	.508	.510	.470	.443	.354	.331	.314	.206	.195	.188	.067	.064	.062	
10.0	.588	.538	.505	.507	.467	.441	.351	.329	.313	.205	.194	.187	.066	.064	.062	

C Range: 0 - 360DEG
C Interval: 5.0DEG
Test Speed: MEDIUM
Temperature:25.3DEG
Operators:
Test Date:2026-01-17

γ Range: 0 - 180DEG
γ Interval: 0.5DEG
Test System:EVERFINE GO-2000_V1 SYSTEM V2.0.406.10
Humidity:65.0%
Test Distance:11.700m [K=0.8547]
Remarks:

UGR(Unified Glare Rating) Table

Test:U:229.79V I:0.1294A P:28.243W PF:0.9496 Freq:49.99Hz Lamp Flux:3664.45x1 lm											
NAME:					TYPE:			WEIGHT:			
SPEC.:					DIM.: 600*203*10			SERIAL No.:			
MFR.:					SUR.:0.58*0.122			Shielding Angle:			
ceiling/cavity	0.7	0.7	0.5	0.5	0.3	0.7	0.7	0.5	0.5	0.3	
walls	0.5	0.3	0.5	0.3	0.3	0.5	0.3	0.5	0.3	0.3	
working plane	0.2	0.2	0.2	0.2	0.2	0.2	0.2	0.2	0.2	0.2	
Room dimensions		Viewed crosswise					Viewed endwise				
x = 2H y = 2H		13.9	14.8	14.9	15.7	17.0	13.0	13.9	14.0	14.8	16.0
3H		14.5	15.2	15.5	16.2	17.5	13.8	14.5	14.8	15.5	16.8
4H		15.0	15.6	16.0	16.6	17.9	14.2	14.8	15.1	15.8	17.1
6H		15.6	16.2	16.6	17.2	18.5	14.7	15.3	15.7	16.3	17.6
8H		15.8	16.4	16.8	17.4	18.7	14.9	15.5	16.0	16.5	17.9
12H		16.0	16.6	17.0	17.6	18.9	15.1	15.7	16.1	16.7	18.0
4H 2H		14.0	14.6	15.0	15.6	16.9	13.2	13.9	14.2	14.9	16.2
3H		14.7	15.3	15.7	16.3	17.6	14.1	14.7	15.2	15.7	17.1
4H		15.4	15.9	16.4	16.9	18.3	14.7	15.2	15.7	16.2	17.6
6H		16.2	16.6	17.2	17.7	19.1	15.4	15.9	16.5	16.9	18.3
8H		16.5	16.9	17.6	18.0	19.4	15.7	16.2	16.8	17.2	18.6
12H		16.8	17.1	17.8	18.2	19.6	16.0	16.3	17.0	17.4	18.8
8H 4H		15.5	15.9	16.5	16.9	18.3	14.8	15.3	15.9	16.3	17.7
6H		16.5	16.8	17.6	17.9	19.3	15.8	16.2	16.9	17.2	18.7
8H		16.9	17.2	18.0	18.3	19.8	16.3	16.6	17.4	17.7	19.1
12H		17.3	17.6	18.4	18.7	20.1	16.6	16.8	17.7	17.9	19.4
12H 4H		15.5	15.8	16.5	16.9	18.3	14.9	15.2	15.9	16.3	17.7
6H		16.5	16.8	17.6	17.9	19.4	15.9	16.2	17.0	17.3	18.7
8H		17.0	17.3	18.1	18.4	19.8	16.4	16.7	17.5	17.8	19.2
Variations with the observer position at spacings:											
S = 1.0H		+ 0.3 / - 0.3					+ 0.4 / - 0.4				
1.5H		+ 0.2 / - 0.3					+ 0.3 / - 0.4				
2.0H		+ 0.6 / - 0.5					+ 0.4 / - 0.3				

CIE Pub.117, 3664 lm Total Lamp Luminous Flux Corrected ($8\log(F/F_0) = 4.5$)

C Range: 0 - 360DEG
C Interval: 5.0DEG
Test Speed: MEDIUM
Temperature:25.3DEG
Operators:
Test Date:2026-01-17

γ Range: 0 - 180DEG
 γ Interval: 0.5DEG
Test System:EVERFINE GO-2000_V1 SYSTEM V2.0.406.10
Humidity:65.0%
Test Distance:11.700m [K=0.8547]
Remarks:

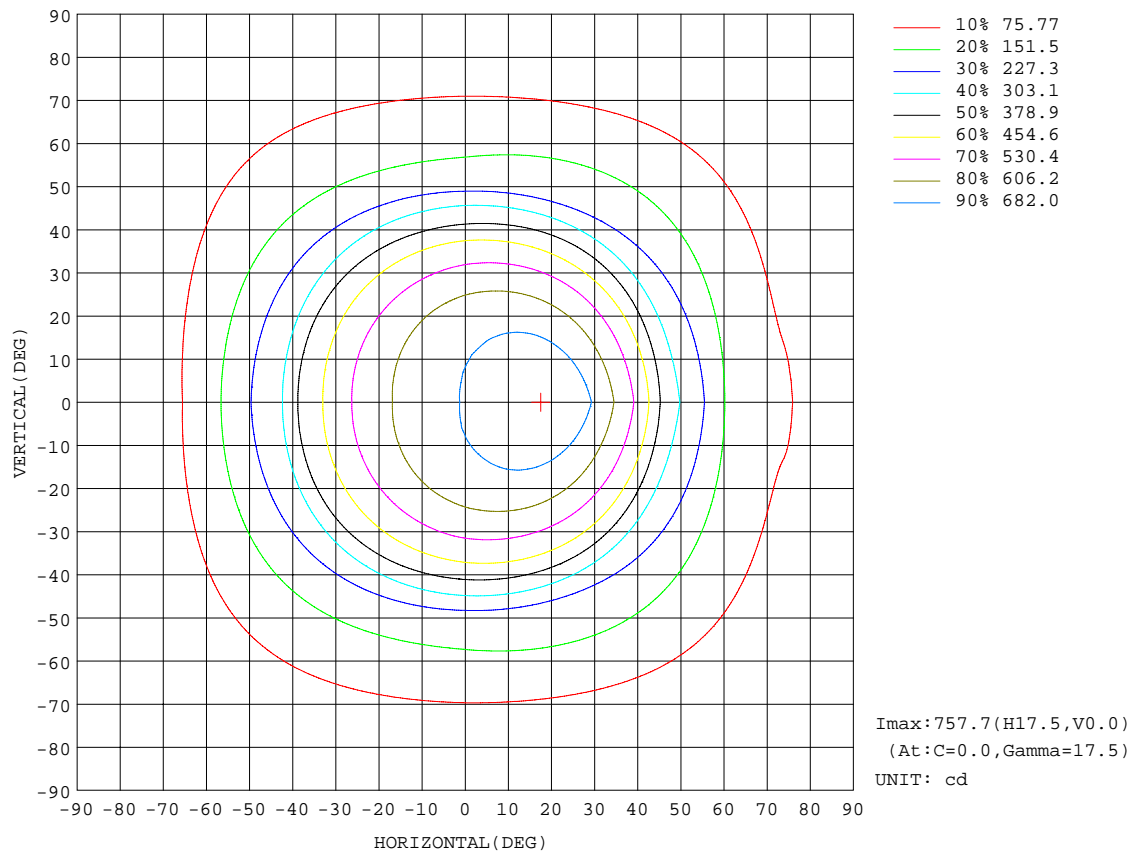
```

γ Range: 0 - 180DEG
γ Interval: 0.5DEG
Test System:EVERFINE GO-2000_V1 SYSTEM V2.0.406.10
Humidity:65.0%
Test Distance:11.700m [K=0.8547]
Remarks:

```

ISOCANDELA DIAGRAM

Test:U:229.79V I:0.1294A P:28.243W PF:0.9496 Freq:49.99Hz Lamp Flux:3664.45x1 lm		
NAME:	TYPE:	WEIGHT:
SPEC.:	DIM.: 600*203*10	SERIAL No.:
MFR.:	SUR.:0.58*0.122	Shielding Angle:



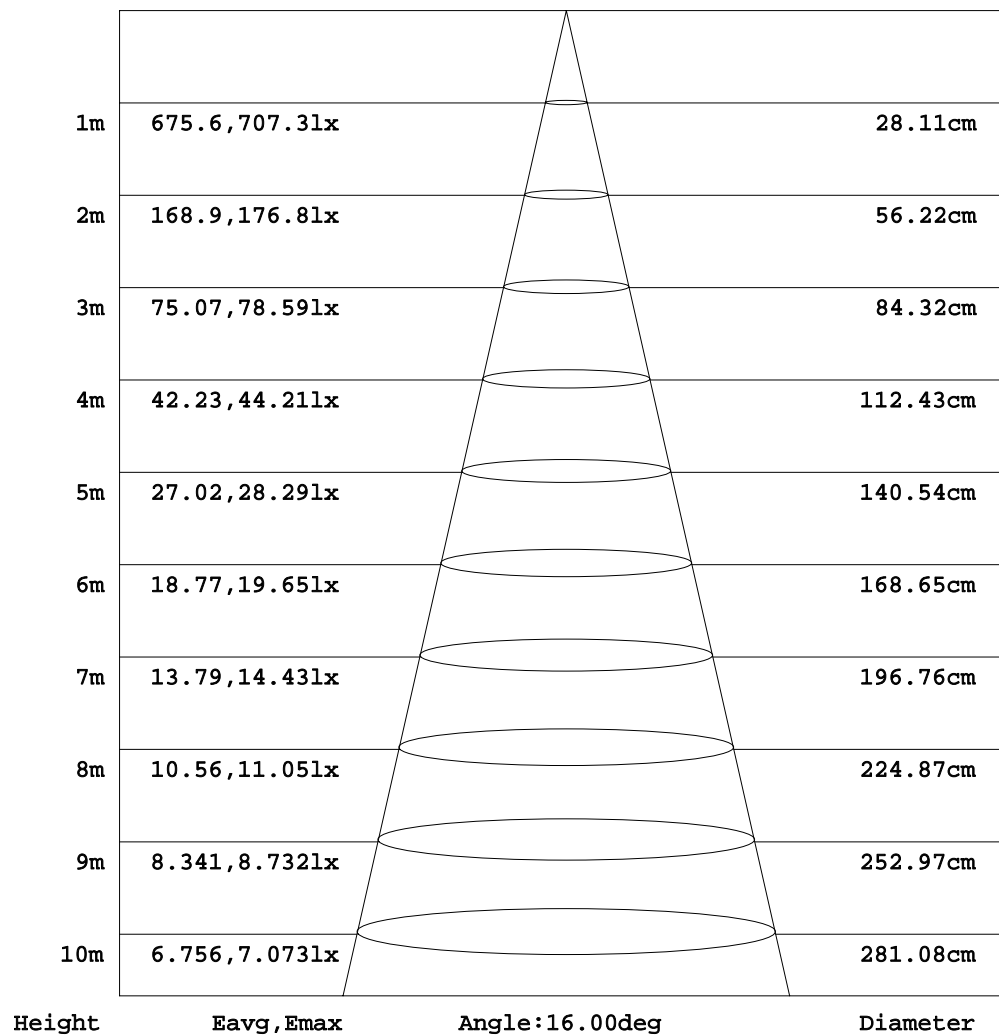
C Range: 0 - 360DEG
C Interval: 5.0DEG
Test Speed: MEDIUM
Temperature:25.3DEG
Operators:
Test Date:2026-01-17

γ Range: 0 - 180DEG
 γ Interval: 0.5DEG
Test System:EVERFINE GO-2000_V1 SYSTEM V2.0.406.10
Humidity:65.0%
Test Distance:11.700m [K=0.8547]
Remarks:

AAI Figure

Test:U:229.79V I:0.1294A P:28.243W PF:0.9496 Freq:49.99Hz Lamp Flux:3664.45x1 lm		
NAME:	TYPE:	WEIGHT:
SPEC.:	DIM.: 600*203*10	SERIAL No.:
MFR.:	SUR.:0.58*0.122	Shielding Angle:

Flux out:41.92 lm



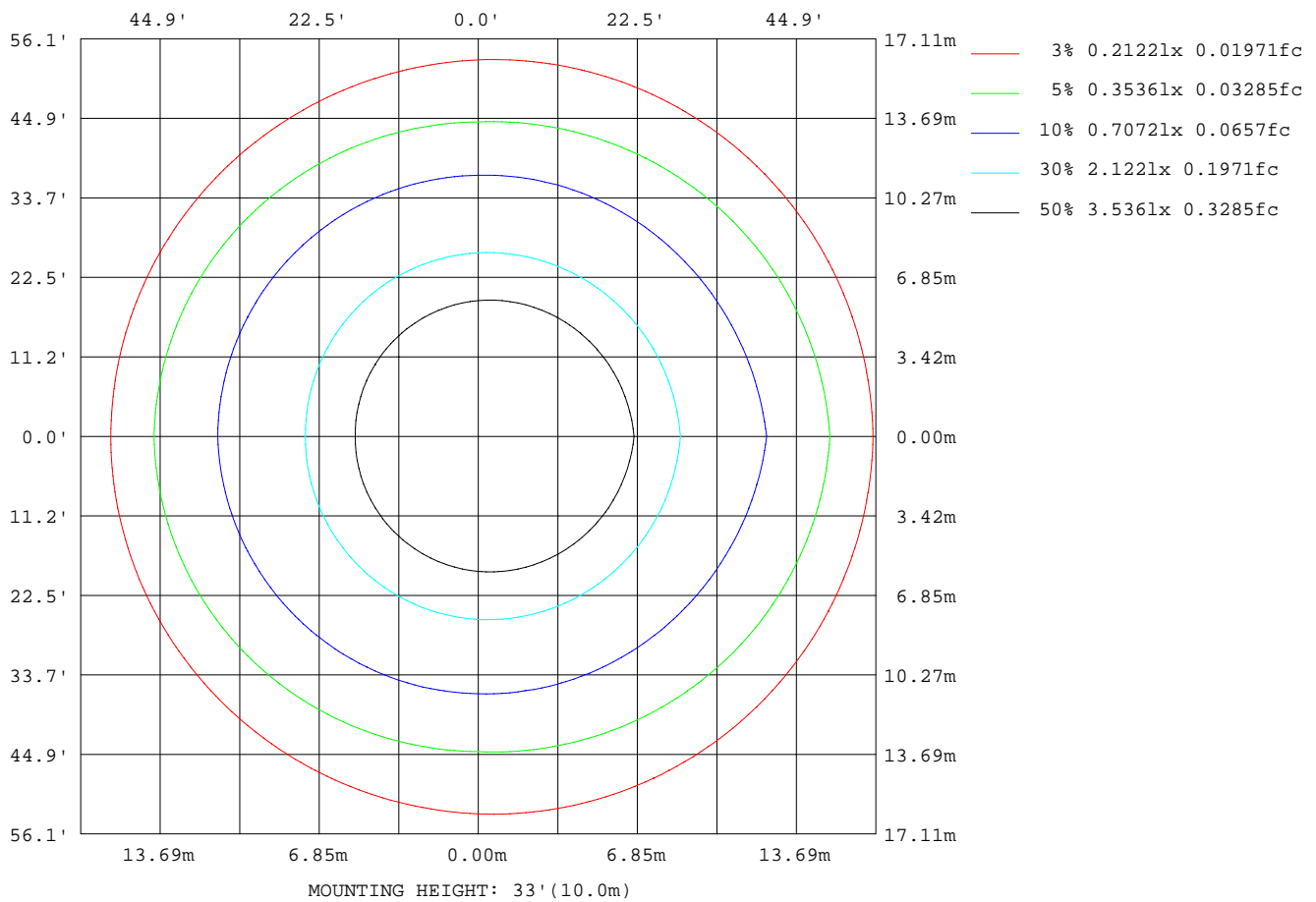
Note:The Curves indicate the illuminated area and the average illumination when the luminaire is at different distance.

C Range: 0 - 360DEG
 C Interval: 5.0DEG
 Test Speed: MEDIUM
 Temperature:25.3DEG
 Operators:
 Test Date:2026-01-17

γ Range: 0 - 180DEG
 γ Interval: 0.5DEG
 Test System:EVERFINE GO-2000_V1 SYSTEM V2.0.406.10
 Humidity:65.0%
 Test Distance:11.700m [K=0.8547]
 Remarks:

ISOLUX DIAGRAM

Test:U:229.79V I:0.1294A P:28.243W PF:0.9496 Freq:49.99Hz Lamp Flux:3664.45x1 lm		
NAME:	TYPE:	WEIGHT:
SPEC.:	DIM.: 600*203*10	SERIAL No.:
MFR.:	SUR.:0.58*0.122	Shielding Angle:



C Range: 0 - 360DEG
 C Interval: 5.0DEG
 Test Speed: MEDIUM
 Temperature: 25.3DEG
 Operators:
 Test Date: 2026-01-17

γ Range: 0 - 180DEG
 γ Interval: 0.5DEG
 Test System: EVERFINE GO-2000_V1 SYSTEM V2.0.406.10
 Humidity: 65.0%
 Test Distance: 11.700m [K=0.8547]
 Remarks:

LED Avg.L Report

Test:U:229.79V I:0.1294A P:28.243W PF:0.9496 Freq:49.99Hz Lamp Flux:3664.45x1 lm		
NAME:	TYPE:	WEIGHT:
SPEC.:	DIM.: 600*203*10	SERIAL No.:
MFR.:	SUR.:0.58*0.122	Shielding Angle:

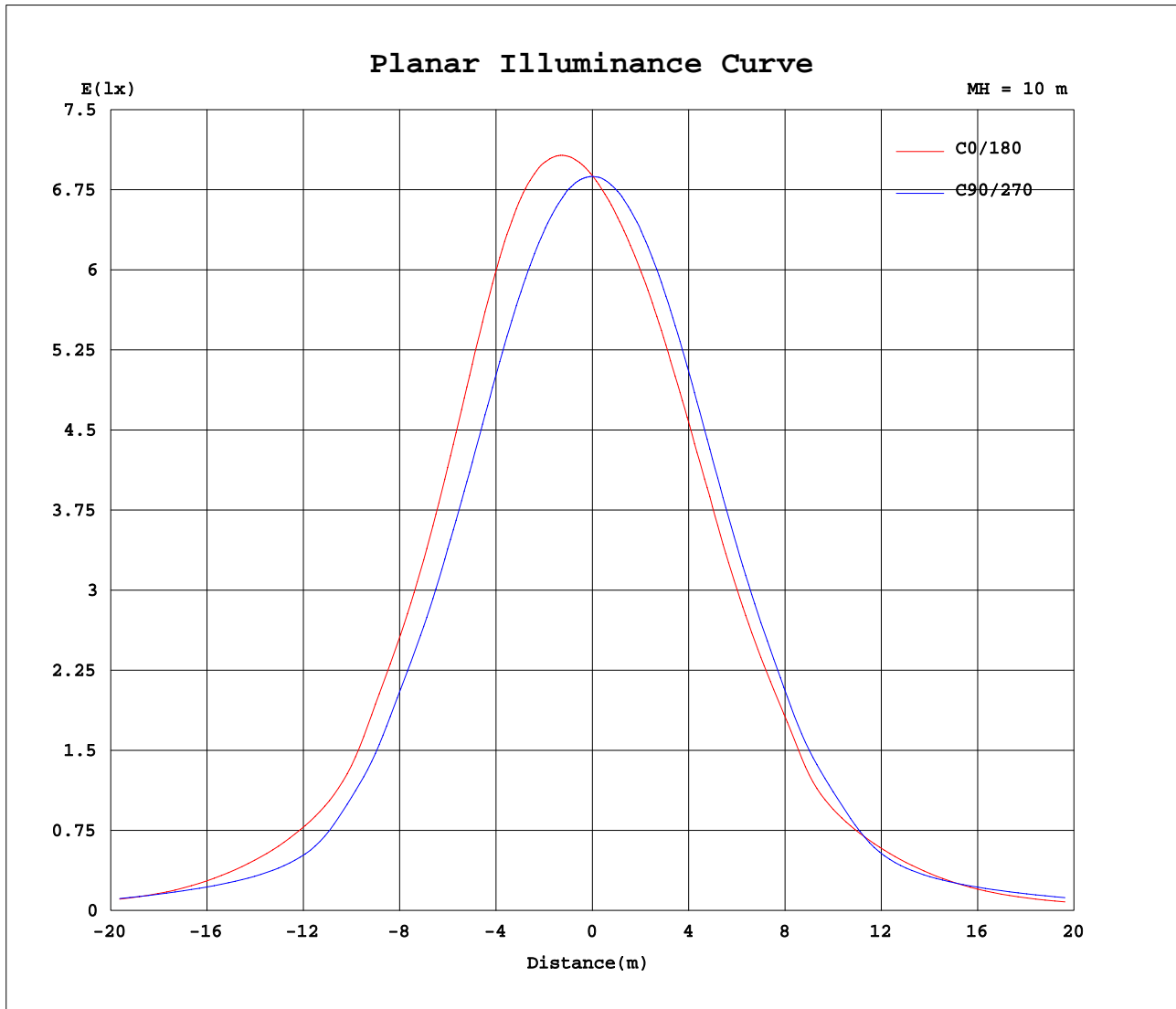
AvgL	cd/m2
L_0~180(65)av	2936
L_0~180(75)av	3834
L_0~180(85)av	4662
L_90~270(65)av	3770
L_90~270(75)av	3102
L_90~270(85)av	4174
L_45(65)av	3436
L_45(75)av	3354
L_45(85)av	4309

Standard: GB/T 29293-2012

C Range: 0 - 360DEG
C Interval: 5.0DEG
Test Speed: MEDIUM
Temperature:25.3DEG
Operators:
Test Date:2026-01-17

γ Range: 0 - 180DEG
 γ Interval: 0.5DEG
Test System:EVERFINE GO-2000_V1 SYSTEM V2.0.406.10
Humidity:65.0%
Test Distance:11.700m [K=0.8547]
Remarks:

Planar Illuminance Curve



C Range: 0 - 360DEG
C Interval: 5.0DEG
Test Speed: MEDIUM
Temperature: 25.3DEG
Operators:
Test Date: 2026-01-17

γ Range: 0 - 180DEG
 γ Interval: 0.5DEG
Test System: EVERFINE GO-2000_V1 SYSTEM V2.0.406.10
Humidity: 65.0%
Test Distance: 11.700m [K=0.8547]
Remarks:

LUMINOUS DISTRIBUTION INTENSITY DATA

Test:U:229.79V I:0.1294A P:28.243W PF:0.9496 Freq:49.99Hz Lamp Flux:3664.45x1 lm		
NAME:	TYPE:	WEIGHT:
SPEC.:	DIM.: 600*203*10	SERIAL No.:
MFR.:	SUR.:0.58*0.122	Shielding Angle:

Table--1

UNIT: cd

C(°) \ γ (°)	0	5	10	15	20	25	30	35	40	45	50	55	60	65	70	75	80	85	90
0	688	688	688	688	688	688	688	688	688	688	688	688	688	688	688	688	688	688	688
5	713	712	710	708	707	705	703	702	700	699	697	696	694	693	691	690	688	687	686
10	737	733	729	726	722	718	715	712	708	705	702	698	695	692	689	686	684	681	678
15	755	749	743	737	731	725	720	714	709	704	699	694	689	685	680	676	672	668	664
20	755	747	739	732	724	717	710	703	696	689	683	677	671	665	659	654	649	644	639
25	727	719	710	701	693	685	677	669	662	655	648	641	635	628	622	616	611	605	600
30	672	664	656	647	639	632	624	617	610	603	596	589	583	577	571	565	559	554	549
35	598	590	582	575	567	560	553	547	540	534	527	521	516	510	504	499	494	489	484
40	514	506	499	491	484	477	471	464	458	451	446	440	434	429	423	418	414	409	404
45	384	378	372	366	361	356	350	345	340	336	331	327	322	318	314	311	307	303	300
50	300	291	283	275	267	260	253	246	240	235	229	224	220	215	212	208	205	202	200
55	234	228	222	216	211	206	201	196	192	188	184	180	177	174	171	168	166	164	162
60	154	154	153	153	152	152	151	150	150	149	148	147	146	145	144	143	142	141	140
65	97.9	99.5	101	102	104	105	106	107	107	108	109	109	109	109	109	109	109	109	108
70	79.7	79.4	79.1	78.8	78.4	78.1	77.8	77.5	77.2	76.9	76.6	76.2	75.9	75.6	75.3	75.0	74.7	74.4	74.0
75	76.8	75.0	73.3	71.7	70.2	68.7	67.3	66.0	64.8	63.7	62.6	61.7	60.8	60.0	59.2	58.6	58.0	57.5	57.1
80	56.3	56.0	55.6	55.3	54.9	54.6	54.2	53.9	53.5	53.2	52.8	52.4	52.1	51.7	51.3	50.9	50.5	50.1	49.7
85	33.5	32.7	31.9	31.2	30.5	29.8	29.2	28.5	28.0	27.4	26.9	26.4	25.9	25.5	25.1	24.7	24.4	24.1	23.8
90	10.3	9.89	9.49	9.10	8.72	8.35	7.99	7.63	7.29	6.96	6.63	6.32	6.01	5.71	5.42	5.14	4.88	4.62	4.36
95	129	123	118	113	108	103	97.6	92.8	88.2	83.6	79.1	74.8	70.6	66.4	62.4	58.6	54.8	51.1	47.6
100	283	270	257	244	232	221	210	199	189	179	169	160	152	144	136	129	122	115	110
105	424	404	386	368	351	334	319	303	289	275	262	250	238	227	217	207	198	190	182
110	542	519	498	477	457	438	420	402	386	370	355	340	327	314	302	291	281	271	262
115	627	604	581	560	539	519	500	482	465	448	432	417	403	390	378	366	355	345	336
120	664	642	621	600	580	562	544	526	510	494	479	465	452	440	428	417	407	398	389
125	654	635	617	599	582	566	551	536	522	508	496	484	472	462	452	442	434	426	419
130	644	627	610	595	579	565	551	538	525	513	502	491	481	472	463	455	447	440	434
135	638	624	611	598	585	573	562	551	540	530	520	511	503	495	487	480	473	467	461
140	628	617	606	595	585	576	566	557	549	541	533	525	518	511	505	499	493	488	483
145	612	603	595	587	579	571	563	556	549	543	536	530	525	519	514	509	504	500	496
150	580	574	569	563	557	552	547	542	537	533	528	524	520	516	512	508	505	502	499
155	567	562	557	552	548	543	539	535	530	526	523	519	516	512	509	506	503	500	498
160	574	570	566	562	558	555	551	548	545	541	538	535	532	530	527	524	522	520	517
165	569	567	564	562	559	557	554	552	550	548	546	544	542	540	538	536	534	532	531
170	559	557	556	554	553	551	550	548	547	546	544	543	542	541	539	538	537	536	535
175	538	538	537	537	536	536	535	535	534	534	533	533	533	532	532	531	531	531	530
180	520	520	520	520	520	520	520	520	520	520	520	520	520	520	520	520	520	520	520

C Range: 0 - 360DEG
C Interval: 5.0DEG
Test Speed: MEDIUM
Temperature:25.3DEG
Operators:
Test Date:2026-01-17

γ Range: 0 - 180DEG
γ Interval: 0.5DEG
Test System:EVERFINE GO-2000_V1 SYSTEM V2.0.406.10
Humidity:65.0%
Test Distance:11.700m [K=0.8547]
Remarks:

LUMINOUS DISTRIBUTION INTENSITY DATA

Test:U:229.79V I:0.1294A P:28.243W PF:0.9496 Freq:49.99Hz Lamp Flux:3664.45x1 lm		
NAME:	TYPE:	WEIGHT:
SPEC.:	DIM.: 600*203*10	SERIAL No.:
MFR.:	SUR.:0.58*0.122	Shielding Angle:

Table--2

UNIT: cd

C(DEG) γ (DEG)	95	100	105	110	115	120	125	130	135	140	145	150	155	160	165	170	175	180	185
0	688	688	688	688	688	688	688	688	688	688	688	688	688	688	688	688	688	688	688
5	684	682	681	679	678	676	675	673	672	671	670	669	668	667	666	666	665	665	665
10	675	672	669	666	664	661	659	656	654	652	650	648	647	646	644	643	643	642	643
15	660	655	652	648	644	641	638	635	632	629	627	625	623	621	620	619	618	617	618
20	634	629	624	620	616	612	608	604	601	598	595	593	591	589	587	586	585	585	586
25	594	589	584	579	575	571	567	563	560	556	554	551	549	547	545	544	543	543	544
30	543	538	533	528	523	519	515	511	507	504	501	498	496	493	492	490	489	489	490
35	479	475	470	466	461	457	454	450	447	444	441	439	437	435	434	433	432	431	432
40	400	395	391	387	383	380	376	373	370	368	365	363	361	360	358	357	356	356	356
45	297	294	291	288	285	282	280	278	276	274	273	272	270	270	269	269	268	268	269
50	200	200	200	201	201	203	204	205	207	209	211	213	215	217	219	221	222	224	223
55	161	161	160	160	161	161	161	162	163	164	164	165	166	167	168	169	170	171	170
60	138	136	135	133	131	129	127	126	124	122	121	119	118	117	116	115	114	113	114
65	107	105	103	101	99.1	97.1	95.1	93.1	91.1	89.2	87.3	85.6	83.9	82.3	80.9	79.7	78.6	77.7	79.3
70	73.6	73.1	72.6	72.1	71.7	71.2	70.8	70.4	70.0	69.7	69.4	69.1	68.9	68.7	68.5	68.4	68.4	68.4	69.0
75	57.1	57.3	57.4	57.7	58.0	58.3	58.7	59.1	59.6	60.0	60.5	61.0	61.5	61.9	62.4	62.8	63.2	63.6	63.2
80	49.2	48.7	48.1	47.6	47.1	46.6	46.1	45.6	45.1	44.7	44.2	43.8	43.4	43.1	42.7	42.5	42.2	42.0	42.1
85	23.6	23.5	23.3	23.2	23.2	23.1	23.1	23.1	23.1	23.1	23.2	23.3	23.4	23.5	23.6	23.7	23.9	24.0	24.2
90	4.08	3.81	3.54	3.29	3.05	2.83	2.62	2.42	2.24	2.07	1.92	1.79	1.68	1.59	1.52	1.47	1.44	1.43	1.57
95	43.7	39.9	36.2	32.7	29.3	26.1	23.0	20.2	17.5	15.0	12.7	10.7	8.83	7.24	5.88	4.78	3.94	3.37	4.12
100	105	100	96.3	92.8	89.6	86.7	84.3	82.2	80.4	78.9	77.8	76.9	76.3	76.1	76.0	76.2	76.7	77.3	76.9
105	177	172	168	164	161	159	157	156	155	154	154	154	155	155	156	158	159	161	159
110	256	251	247	243	240	237	235	234	233	232	232	232	233	234	236	237	239	241	239
115	330	325	320	316	313	311	309	307	306	306	306	306	307	308	310	311	313	315	313
120	384	379	375	371	369	366	365	364	363	363	363	364	365	366	367	369	371	373	371
125	414	410	407	405	403	401	400	399	399	399	400	401	402	403	404	406	408	410	408
130	430	427	424	422	420	419	418	418	418	418	419	419	420	422	423	425	426	428	426
135	457	454	450	448	445	443	442	441	440	439	439	439	439	439	440	440	441	442	441
140	479	476	473	470	467	465	463	461	460	459	458	457	457	456	456	457	457	458	457
145	492	489	486	483	481	479	477	475	473	472	471	470	469	469	469	468	468	469	468
150	496	493	490	488	486	484	482	480	479	478	476	475	474	474	473	473	472	472	472
155	495	493	491	489	487	485	484	482	481	480	479	478	477	477	476	476	476	476	476
160	515	513	510	508	507	505	503	502	500	499	498	496	496	495	494	494	493	493	493
165	529	527	525	523	522	520	518	517	516	514	513	512	511	510	510	509	509	508	509
170	534	533	532	531	530	529	528	527	526	525	524	524	523	523	522	522	522	521	521
175	530	529	529	528	528	528	527	527	526	526	526	525	525	525	525	524	524	524	524
180	520	520	520	520	520	520	520	520	520	520	520	520	520	520	520	520	520	520	520

C Range: 0 - 360DEG
C Interval: 5.0DEG
Test Speed: MEDIUM
Temperature:25.3DEG
Operators:
Test Date:2026-01-17

γ Range: 0 - 180DEG
γ Interval: 0.5DEG
Test System:EVERFINE GO-2000_V1 SYSTEM V2.0.406.10
Humidity:65.0%
Test Distance:11.700m [K=0.8547]
Remarks:

LUMINOUS DISTRIBUTION INTENSITY DATA

Test:U:229.79V I:0.1294A P:28.243W PF:0.9496 Freq:49.99Hz Lamp Flux:3664.45x1 lm		
NAME:	TYPE:	WEIGHT:
SPEC.:	DIM.: 600*203*10	SERIAL No.:
MFR.:	SUR.:0.58*0.122	Shielding Angle:

Table--3

UNIT: cd

C(DEG) γ (DEG)	190	195	200	205	210	215	220	225	230	235	240	245	250	255	260	265	270	275	280
0	688	688	688	688	688	688	688	688	688	688	688	688	688	688	688	688	688	688	688
5	666	666	667	668	669	670	671	672	673	675	676	677	679	681	682	684	685	687	688
10	643	644	646	647	649	651	652	655	657	659	662	664	667	670	673	676	679	682	684
15	619	620	622	624	626	628	630	633	636	639	643	646	650	654	658	662	666	670	674
20	587	588	590	592	594	597	600	603	607	610	614	618	623	627	632	637	642	647	652
25	545	547	548	551	553	556	559	563	566	570	575	579	584	589	594	599	605	610	615
30	491	493	495	497	500	503	506	510	514	518	522	527	532	537	542	548	553	558	564
35	433	435	437	439	442	445	448	451	454	458	462	467	471	476	480	485	491	495	500
40	357	358	360	361	363	366	368	371	374	377	380	384	388	392	396	401	405	410	414
45	271	272	274	276	278	280	283	285	288	291	294	297	301	304	307	311	315	318	321
50	222	220	219	217	216	214	213	211	210	209	208	207	207	206	206	206	207	209	212
55	169	168	167	166	164	163	162	161	160	160	159	159	158	158	158	159	159	161	163
60	115	116	117	118	120	121	123	125	126	128	130	132	134	136	137	139	141	142	143
65	81.0	82.9	85.0	87.2	89.5	91.9	94.3	96.8	99.3	102	104	107	109	111	113	115	117	118	118
70	69.7	70.3	71.1	71.8	72.6	73.5	74.3	75.2	76.0	76.9	77.7	78.5	79.3	80.1	80.9	81.6	82.3	82.5	82.8
75	62.7	62.3	61.8	61.2	60.7	60.2	59.7	59.2	58.7	58.3	57.8	57.5	57.2	56.9	56.7	56.6	56.5	56.9	57.4
80	42.2	42.3	42.5	42.7	42.9	43.2	43.5	43.8	44.2	44.5	44.9	45.3	45.8	46.2	46.7	47.2	47.7	48.1	48.5
85	24.3	24.4	24.6	24.7	24.9	25.1	25.3	25.5	25.7	25.9	26.1	26.4	26.6	26.9	27.1	27.4	27.7	27.9	28.2
90	1.72	1.90	2.10	2.31	2.54	2.79	3.05	3.32	3.60	3.89	4.19	4.50	4.81	5.13	5.45	5.77	6.09	6.34	6.58
95	5.13	6.41	7.94	9.71	11.7	13.9	16.4	19.0	21.8	24.8	28.0	31.3	34.8	38.4	42.1	46.0	50.0	53.5	57.2
100	76.6	76.6	76.9	77.4	78.2	79.2	80.5	82.2	84.1	86.4	89.0	92.0	95.3	99.0	103	108	112	118	125
105	158	157	156	156	155	155	156	156	158	159	161	164	167	170	175	179	185	192	201
110	238	236	235	234	234	234	234	235	236	237	240	242	246	250	254	260	266	274	284
115	311	310	308	307	306	306	306	306	307	309	311	313	316	320	325	330	336	345	355
120	369	367	366	364	363	362	362	362	363	364	365	367	370	373	377	382	388	396	406
125	405	404	402	400	399	398	397	397	397	397	398	400	402	404	407	411	415	422	430
130	424	423	421	420	418	417	417	416	416	416	417	418	420	422	424	428	431	438	445
135	440	439	439	438	438	438	438	439	440	441	442	444	446	449	452	456	460	465	472
140	456	456	456	456	456	457	457	458	460	461	463	465	468	470	474	477	481	486	491
145	468	468	468	468	469	470	471	472	473	475	477	479	481	484	487	490	493	497	502
150	472	472	473	473	474	474	475	477	478	479	481	483	485	487	489	492	495	498	501
155	476	476	476	477	477	478	479	480	481	483	484	486	487	489	491	494	496	499	501
160	494	494	495	496	497	498	499	500	502	503	505	507	509	511	513	515	517	520	522
165	509	510	511	511	512	513	515	516	517	519	520	522	524	525	527	529	531	533	535
170	522	522	522	523	524	524	525	526	526	527	528	529	530	531	532	533	535	536	537
175	524	524	524	525	525	525	525	525	526	526	526	526	527	527	528	528	528	529	529
180	520	520	520	520	520	520	520	520	520	520	520	520	520	520	520	520	520	520	520

C Range: 0 - 360DEG
C Interval: 5.0DEG
Test Speed: MEDIUM
Temperature:25.3DEG
Operators:
Test Date:2026-01-17

γ Range: 0 - 180DEG
γ Interval: 0.5DEG
Test System:EVERFINE GO-2000_V1 SYSTEM V2.0.406.10
Humidity:65.0%
Test Distance:11.700m [K=0.8547]
Remarks:

LUMINOUS DISTRIBUTION INTENSITY DATA

Test:U:229.79V I:0.1294A P:28.243W PF:0.9496 Freq:49.99Hz Lamp Flux:3664.45x1 lm		
NAME:	TYPE:	WEIGHT:
SPEC.:	DIM.: 600*203*10	SERIAL No.:
MFR.:	SUR.:0.58*0.122	Shielding Angle:

Table--4

UNIT: cd

C(DEC)	285	290	295	300	305	310	315	320	325	330	335	340	345	350	355				
γ (DEC)																			
0	688	688	688	688	688	688	688	688	688	688	688	688	688	688	688				
5	690	691	693	694	696	697	699	700	702	703	705	707	708	710	712				
10	687	690	693	696	699	702	705	709	712	715	719	722	726	730	733				
15	678	682	687	691	696	701	705	710	716	721	726	732	737	743	749				
20	657	663	668	674	680	686	692	698	705	712	718	725	733	740	748				
25	621	627	633	639	645	652	658	665	673	680	687	695	703	711	719				
30	569	575	581	587	593	599	606	613	620	627	634	641	649	656	664				
35	505	510	516	521	527	532	538	544	550	557	563	570	577	584	591				
40	419	424	429	435	440	446	452	458	465	471	478	485	492	499	506				
45	325	328	332	335	339	343	347	350	354	358	363	367	371	375	380				
50	215	218	222	226	230	235	240	245	251	257	263	270	277	284	292				
55	166	168	171	175	178	182	186	190	195	199	205	210	215	221	227				
60	144	145	146	147	148	149	150	150	151	152	152	153	153	154	154				
65	118	118	118	117	117	116	115	114	112	111	109	107	105	103	100				
70	83.0	83.1	83.2	83.2	83.2	83.1	83.0	82.9	82.6	82.4	82.1	81.7	81.3	80.8	80.3				
75	58.0	58.6	59.4	60.2	61.1	62.1	63.2	64.4	65.7	67.0	68.4	69.9	71.5	73.2	75.0				
80	48.9	49.3	49.8	50.2	50.7	51.1	51.6	52.1	52.6	53.1	53.6	54.1	54.6	55.2	55.7				
85	28.5	28.8	29.1	29.4	29.7	30.0	30.3	30.6	31.0	31.3	31.6	32.0	32.4	32.7	33.1				
90	6.82	7.07	7.31	7.54	7.78	8.02	8.25	8.48	8.72	8.95	9.18	9.40	9.63	9.85	10.1				
95	60.9	64.7	68.7	72.7	76.8	81.1	85.4	89.8	94.4	99.0	104	109	113	119	124				
100	131	139	146	154	163	172	181	190	201	211	222	233	245	257	270				
105	210	219	230	240	252	264	277	291	305	320	336	352	369	386	405				
110	294	305	317	330	343	357	372	388	405	422	440	459	478	499	520				
115	366	378	390	403	417	432	448	465	482	500	519	539	560	581	604				
120	416	427	438	451	464	478	493	509	525	543	561	580	600	620	642				
125	439	448	458	469	481	493	506	519	534	549	565	581	598	616	635				
130	452	461	469	479	489	500	511	524	536	550	564	578	594	610	626				
135	478	486	493	501	510	519	529	539	550	561	573	585	597	611	624				
140	497	503	509	516	523	531	539	547	556	565	575	585	595	605	616				
145	506	511	517	522	528	534	541	548	555	562	570	578	586	594	603				
150	505	508	512	516	521	525	530	535	540	545	550	556	562	568	574				
155	504	507	511	514	518	521	525	529	533	538	542	547	552	557	562				
160	525	527	530	533	536	539	542	545	548	551	555	558	562	566	570				
165	536	538	540	542	544	546	548	550	553	555	557	559	562	564	567				
170	538	539	540	541	543	544	545	547	548	549	551	552	554	555	557				
175	530	530	531	531	532	532	533	533	534	534	535	536	536	537	537				
180	520	520	520	520	520	520	520	520	520	520	520	520	520	520	520				

C Range: 0 - 360DEG
C Interval: 5.0DEG
Test Speed: MEDIUM
Temperature:25.3DEG
Operators:
Test Date:2026-01-17

γ Range: 0 - 180DEG
γ Interval: 0.5DEG
Test System:EVERFINE GO-2000_V1 SYSTEM V2.0.406.10
Humidity:65.0%
Test Distance:11.700m [K=0.8547]
Remarks: